

capri

Sedile e schienale si accostano tra loro come due foglie unite da uno stelo, una nell'altra, e diventano una solida nicchia curva.

L'interno è imbottito, morbido, accogliente, mentre l'esterno è più asciutto, solido, protettivo: possono essere rivestite interamente in tessuto oppure finite in materiali a contrasto, pelle fuori e tessuto dentro, per sottolineare la differenza e creare diversità.

La struttura è in acciaio, e le gambe si assottigliano terminando a punta, per sottolineare l'appoggio gentile a terra.

The seat and back come together like two leaves joined by a stem, one in the other, and become a solid curved niche.

The interior is padded, soft, welcoming, while the exterior is drier, solid, protective: they can be covered entirely in fabric or finished in contrasting materials, leather outside and fabric inside, to emphasize the difference while creating diversity.

The framework is made of steel, and the tapered legs end with a tip, to emphasize the gentle support on the ground.

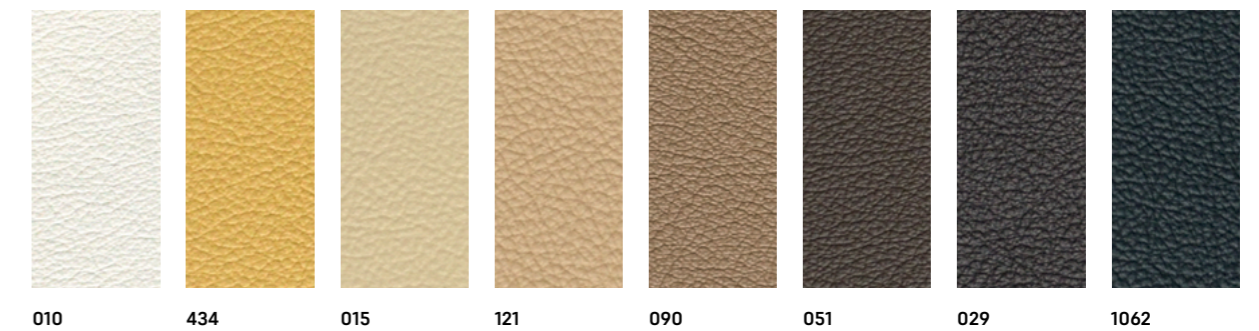
Seduta in legno multistrato.
Imbottitura in poliuretano espanso.
Rivestimento esterno in pelle P3, P2, P1, interno in tessuto.
Telaio in metallo verniciato.

Seat in plywood.
Padding in polyurethane foams.
Upholstery in leather P3, P2, P1 (external part) and fabric (internal part).
Frame in painted metal.



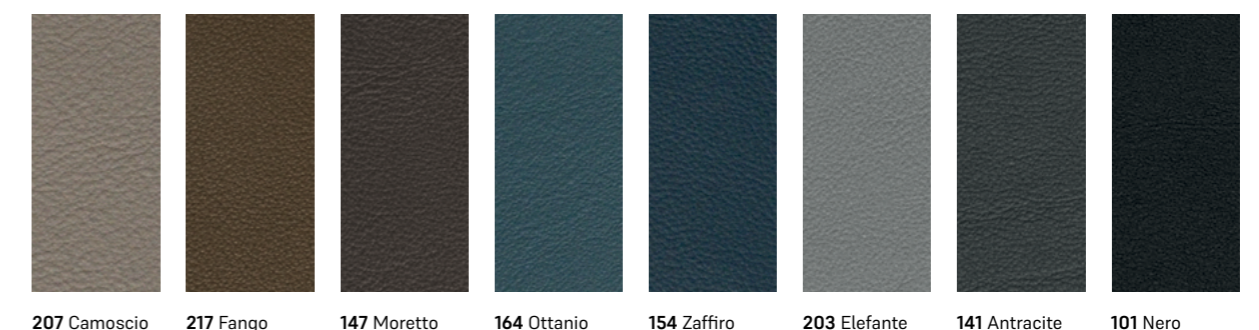
leather CAT. P3 DELTA

external part



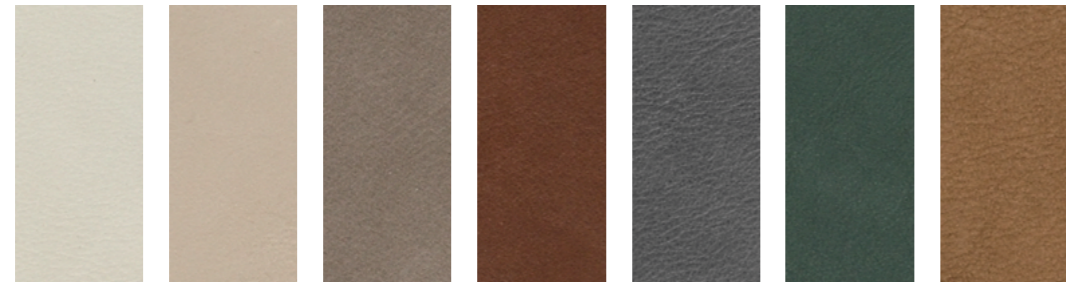
leather CAT. P2 NUVOLA

external part



leather CAT.P1 NABUK

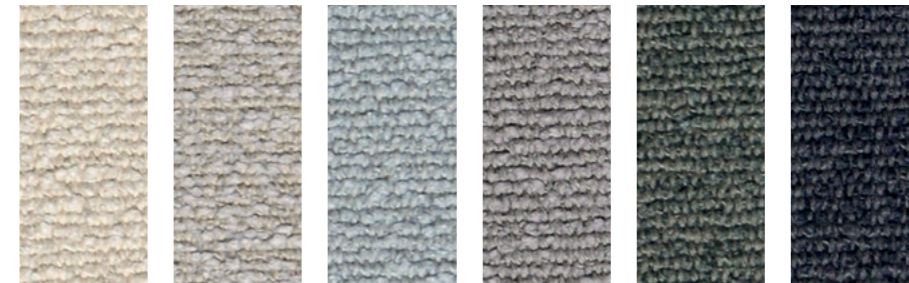
external part



2 Mediterraneo 3 Mediterraneo 23 Mediterraneo 22 Mediterraneo 9 Mediterraneo 11 Mediterraneo 8008 Mediterraneo

fabrics CAT.B+ GOBI

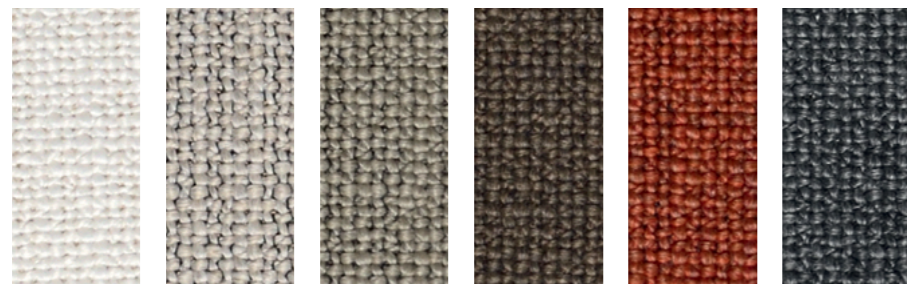
seat



H865 H867 H872 H873 H871 H875

fabrics CAT.A TUNDRA

seat



07 03 30 06 09 11

fabrics CAT.B+ EMYR GRS

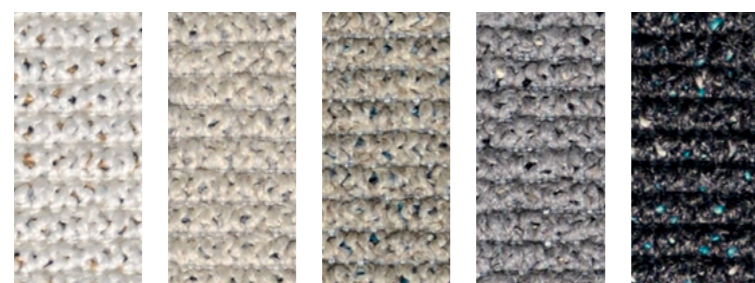
seat



14 05/2 34/2 20/1 200

fabrics CAT.A DUNE

seat



01/1 02 03/11 20 18/2

fabrics CAT.B VALERYE

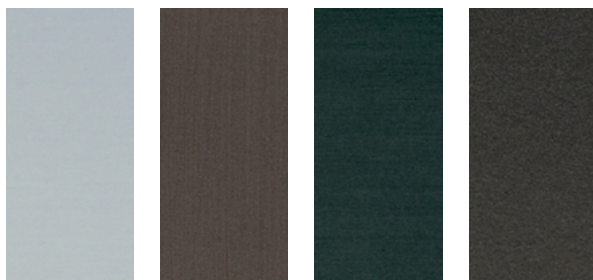
seat



305 336 341 315 332 329

metals

frame



Argento

Bronzo

Blu Ossido

Piombo

Dimensions in centrimetres. The company has the right to modify the models without prior notice. The information given here are based on the latest product information available at the time of printing.

Shades of colours shown as samples may vary due to the fact that they appear on paper, it is for this reason that all colours are considered indicative and the company will not be liable for differences should they arise in the final product.