

# baia

Baia è una sedia in cui l'intenzione di progetto era quella di ingentilire il peso visivo della seduta imbottita a scocca intera, per ingentilire il profilo.

La seduta imbottita è sicuramente di grande comodità: talvolta però le sue linee possono risultare appesantite, perché gli spessori della gomma creano un ingombro visivo maggiore rispetto alle linee filanti delle sedute sottili.

Per ingentilire queste forme, Baia ricorre alla sapienza dell'arte sartoriale: la solida struttura in compensato curvato è modellata a settori, e crea una linea curva che idealmente segue la schiena e la avvolge.

For our chair, Baia, the project's goal was to soften the visual weight of the upholstered seat, to refine the outline.

The padded seat is certainly very comfortable: sometimes, however, its lines can be weighted, because the thickness of the rubber creates a greater visual encumbrance than the sleek lines of the thin seats.

To refine these forms, Baia resorts to the wisdom of tailoring: the solid structure in curved plywood is shaped in sectors, and it creates a curved line that ideally follows the back and wraps it around.

## woods

### structure



Noce Italiano  
Biondo

Teak Gold

Noce Canaletto

Rovere thermo

Struttura in legno multistrato.

Base in legno massello con finitura in essenza.

Imbottitura in poliuretano espanso.

Rivestimento esterno in pelle P3, P2, P1, interno in tessuto o pelle.

Structure in plywood.

Base in solid wood finished with wood essence.

Padding in polyurethane foams.

Upholstery in leather P3, P2, P1 (external part) and fabric or leather (internal part).



## leather CAT. P3 DELTA

### external part/seat



010

434

015

121

090

051

029

1062

# leather CAT. P2 NUVOLA

external part/seat



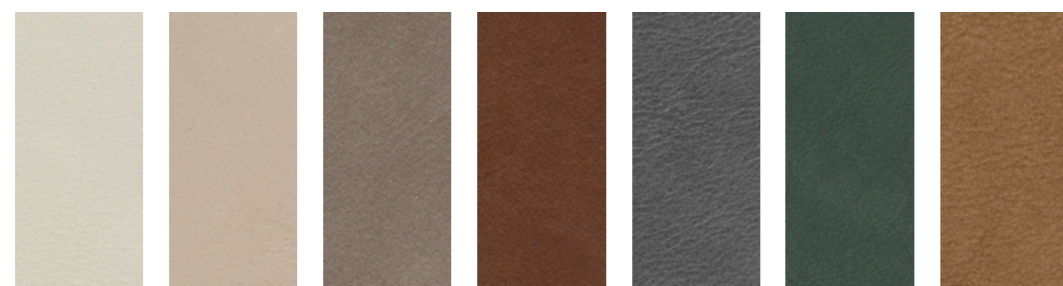
117 Neve 198 Ostrica 199 Canapa 179 Lino 159 Creta 174 Siena 208 Zabaione 131 Cuoio



207 Camoscio 217 Fango 147 Moretto 164 Ottanio 154 Zaffiro 203 Elefante 141 Antracite 101 Nero

# leather CAT.P1 NABUK

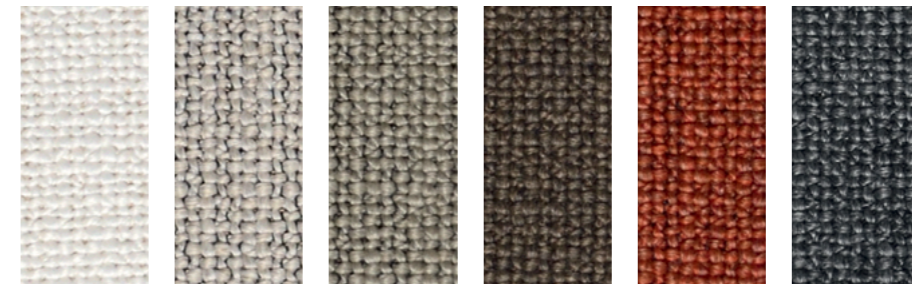
external part/seat



2 Mediterraneo 3 Mediterraneo 23 Mediterraneo 22 Mediterraneo 9 Mediterraneo 11 Mediterraneo 8008 Mediterraneo

# fabrics CAT.A TUNDRA

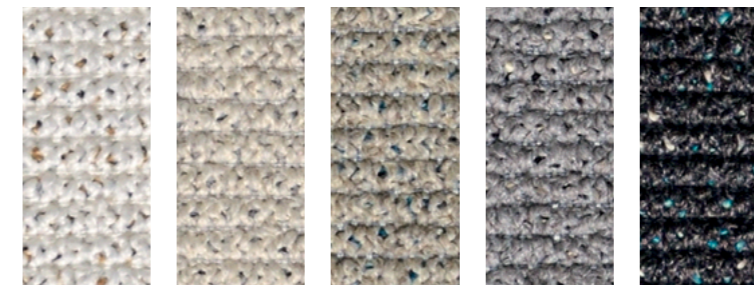
seat



07 03 30 06 09 11

# fabrics CAT.A DUNE

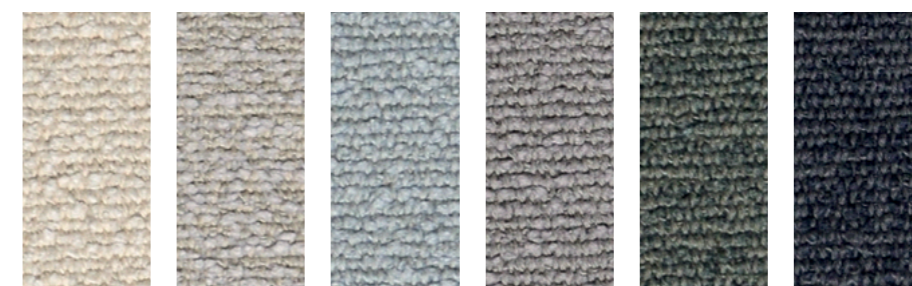
seat



01/1 02 03/11 20 18/2

# fabrics CAT.B+ GOBI

seat



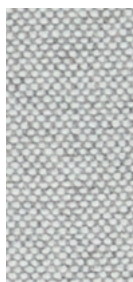
H865 H867 H872 H873 H871 H875

# fabrics CAT.B+ EMYR GRS

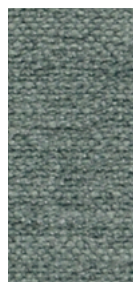
seat



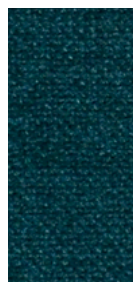
14



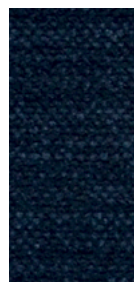
05/2



34/2



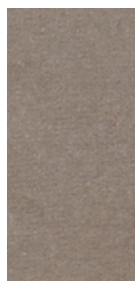
20/1



200

# fabrics CAT.B VALERYE

seat



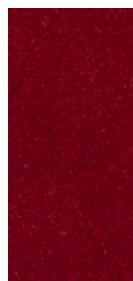
305



336



341



315



332



329

Dimensions in centrimetres. The company has the right to modify the models without prior notice. The information given here are based on the latest product information available at the time of printing.

Shades of colours shown as samples may vary due to the fact that they appear on paper, it is for this reason that all colours are considered indicative and the company will not be liable for differences should they arise in the final product.