

naviglio

Nel cinquecentenario della nascita di Leonardo da Vinci, Naviglio vuole celebrare sia l'orgoglio per il periodo milanese del grandissimo Maestro, sia la suggestione per l'ideale archetipo del "tavolo da lavoro": la struttura a cavalletto, i volumi leggeri, le forme essenziali.

Naviglio è quasi una tensostruttura, slanciato a ponte tra le due estremità dei suoi sostegni in legno massello. Il top e il "courtesy-panel" sono elementi sottili, finiti in cuoio, come un unico grande sottomano teso come un'ala leggera.

Una elegante suggestione rinascimentale per un ambiente di lavoro caldo e accogliente.

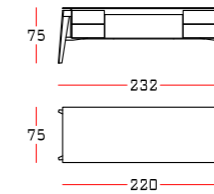
On the 500th anniversary of the birth of Leonardo da Vinci, Naviglio aims at celebrating both the pride for the Milanese period of the great Master, and the suggestion for the ideal archetype of the "work table": the trestle structure, light volumes, essential shapes.

Naviglio is almost a tensile structure, a soaring bridge between the two ends of its solid wood supports. The top and the "courtesy-panel" are thin elements, finished in hide, like a single large desk pad stretched out like a wing.

An elegant Renaissance charm for a warm and welcoming working environment.

Struttura in legno multistrato.
Rivestimento top e frontale in cuoietto P3 o pelle P2 o cuoio P1.
Cassetti in legno multistrato con finitura in essenza.
Gambe in legno con finitura in essenza.

Structure in plywood.
Covering of the top and the front panel in thick leather P3 or leather P2 or cowhide P1.
Drawers in plywood finished with wood essence.
Legs in wood finished with wood essence.



woods

structure/drawers/legs



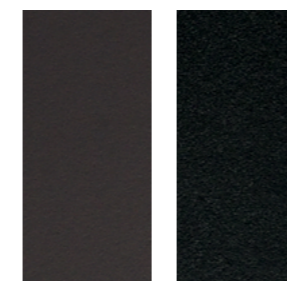
Noce Italiano Biondo Teak Gold Noce Canaletto Rovere thermo

thick leather CAT.P3

top/front panel



C23 Ghiaccio C01 Silver C39 Sella C29 Taupe C28 Fango C31 Tabacco C18 Grafite C32 Caffè



C11 Moka C09 Nero

leather CAT. P2 NUVOLA

top/front panel



117 Neve

198 Ostrica

199 Canapa

179 Lino

159 Creta

174 Siena

208 Zabaione

131 Cuoio



207 Camoscio

217 Fango

147 Moretto

164 Ottanio

154 Zaffiro

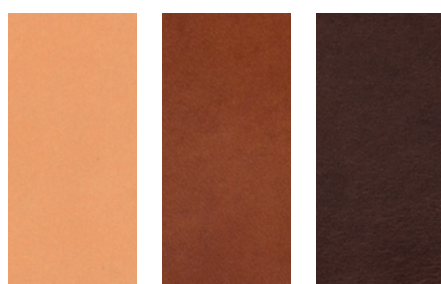
203 Elefante

141 Antracite

101 Nero

cowhide CAT.P1

top/front panel



Naturale

Cuoio

Foresta

Dimensions in centrimetres. The company has the right to modify the models without prior notice. The information given here are based on the latest product information available at the time of printing.

Shades of colours shown as samples may vary due to the fact that they appear on paper, it is for this reason that all colours are considered indicative and the company will not be liable for differences should they arise in the final product.