

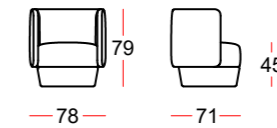
# margot

Margot è una poltroncina di forma circolare che sembra abbracciare come un ricordo, una memoria nostalgica gelosamente custodita.

La sua forma si genera da una base cilindrica, quasi un tamburo fasciato in cuoietto. Intorno a questa base la virgola dello schienale chiude in una parentesi la seduta in una nicchia morbida e raccolta.

Margot is a circular armchair that seems to embrace you like a memory, a nostalgic memory jealously guarded.

Its shape is generated by a cylindrical base, almost a drum wrapped in leather. Around this base, the comma-like-backrest encloses the seat in a parenthesis, forming a soft and snug niche.



Struttura base in legno massello e multistrato rivestita in cuoietto P3.

Struttura seduta in legno multistrato e cinghie elastiche, con imbottitura in poliuretano e rivestimento in tessuto.

Base structure in solid wood and plywood covered in thick leather P3.

Seat structure in plywood and elastic straps, with polyurethane padding and fabric cover.



## thick leather CAT.P3

base



C23 Ghiaccio

C01 Silver

C39 Sella

C29 Taupe

C28 Fango

C31 Tabacco

C18 Grafite

C32 Caffè

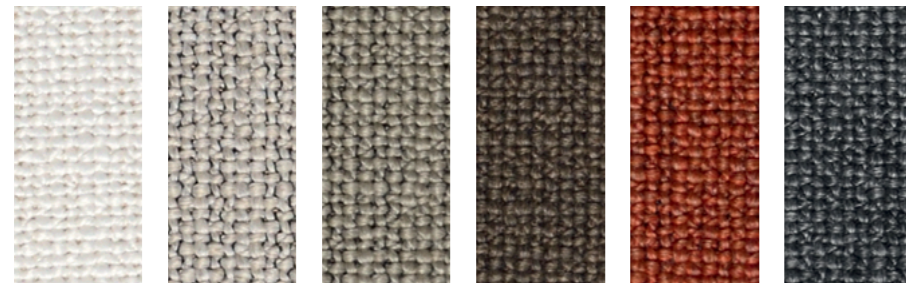


C11 Moka

C09 Nero

# fabrics CAT.A TUNDRA

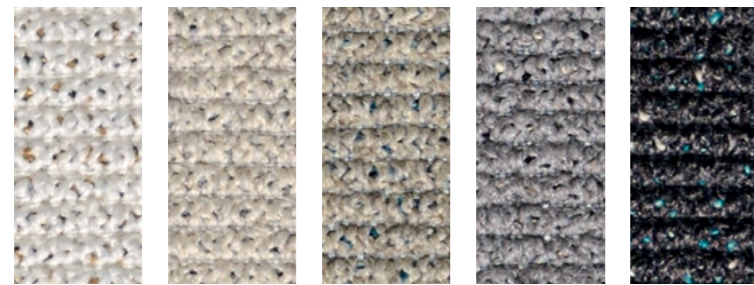
covering



07 03 30 06 09 11

# fabrics CAT.A DUNE

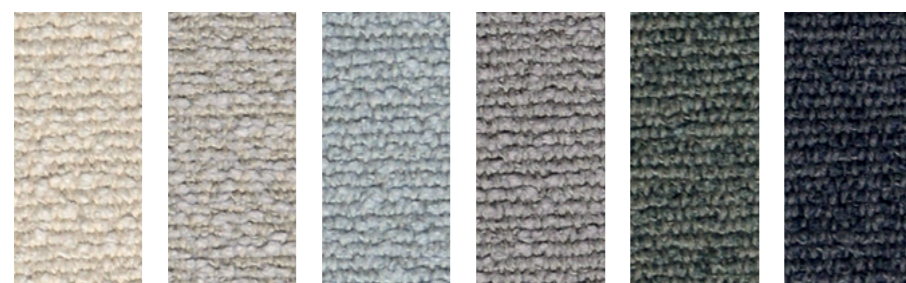
covering



01/1 02 03/11 20 18/2

# fabrics CAT.B+ GOBI

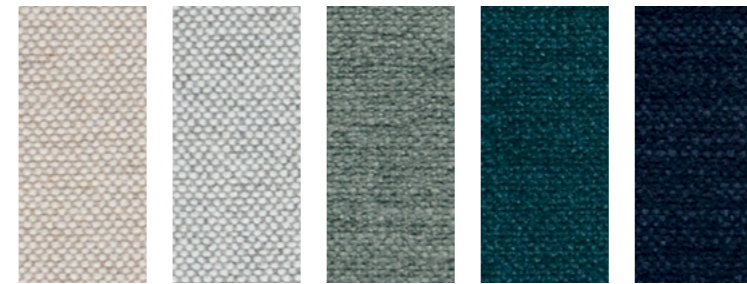
covering



H865 H867 H872 H873 H871 H875

# fabrics CAT.B+ EMYR GRS

covering



14 05/2 34/2 20/1 200

# fabrics CAT.B VALERYE

covering



305 336 341 315 332 329

Dimensions in centrimetres. The company has the right to modify the models without prior notice. The information given here are based on the latest product information available at the time of printing.

Shades of colours shown as samples may vary due to the fact that they appear on paper, it is for this reason that all colours are considered indicative and the company will not be liable for differences should they arise in the final product.