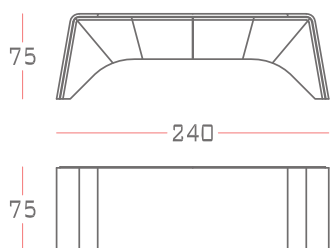


# SCRITTOIO VICTOR DESK

Design Marina Bani



Struttura in legno multistrato rivestita in cuoietto, top scrittoio rivestito in pelle e dettagli in essenza di legno.

Structure in plywood covered in cuoietto. Top covered in leather and parts in wood.

CASA COVRE

# SCRITTOIO **VICTOR** DESK

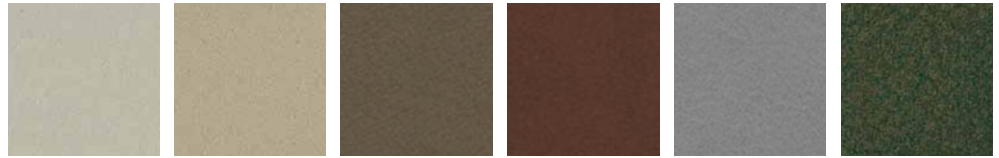
---

## Finiture\_Finishing

### PELLE - LEATHER

---

#### Cat. P1 **NABUK** **TOP**



Mediterraneo  
Col. 2

Mediterraneo  
Col. 3

Mediterraneo  
Col. 23

Mediterraneo  
Col. 22

Mediterraneo  
Col. 9

Mediterraneo  
Col. 11

#### Cat. P2 **NUVOLA** **TOP**



117 Neve

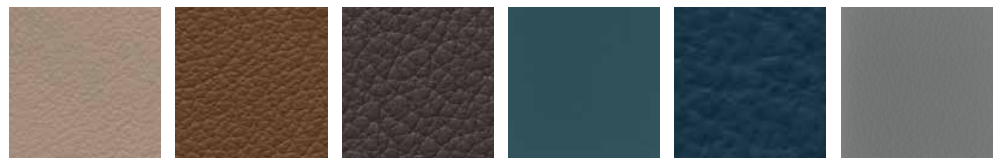
199 Canapa

179 Lino

159 Creta

174 Siena

208 Zabaione



207 Camoscio

217 Fango

147 Moretto

164 Ottanio

154 Zaffiro

203 Elefante



141 Antracite

101 Nero

#### Cat. P3 **DELTA** **TOP**



010

434

015

121

090

051



029

1062

## Finiture\_Finishing

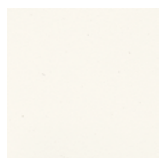
---

### CUOINETTO

---

Cat. P3

**STRUTTURA/STRUCTURE**



C23  
Bianco ghiaccio



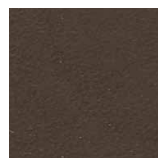
C01  
Silver



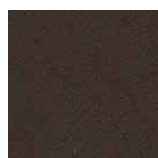
C29  
Taupe



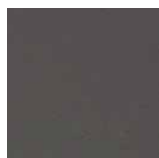
C28  
Fango



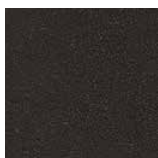
C31  
Tabacco



C11  
Moka



C18  
Grafite



C09  
Nero

### LEGNI - WOOD

---



Noce italiano biondo  
Italian blonde walnut



Teak Gold



Noce Canaletto



Rovere termotrattato  
Oak thermotreated